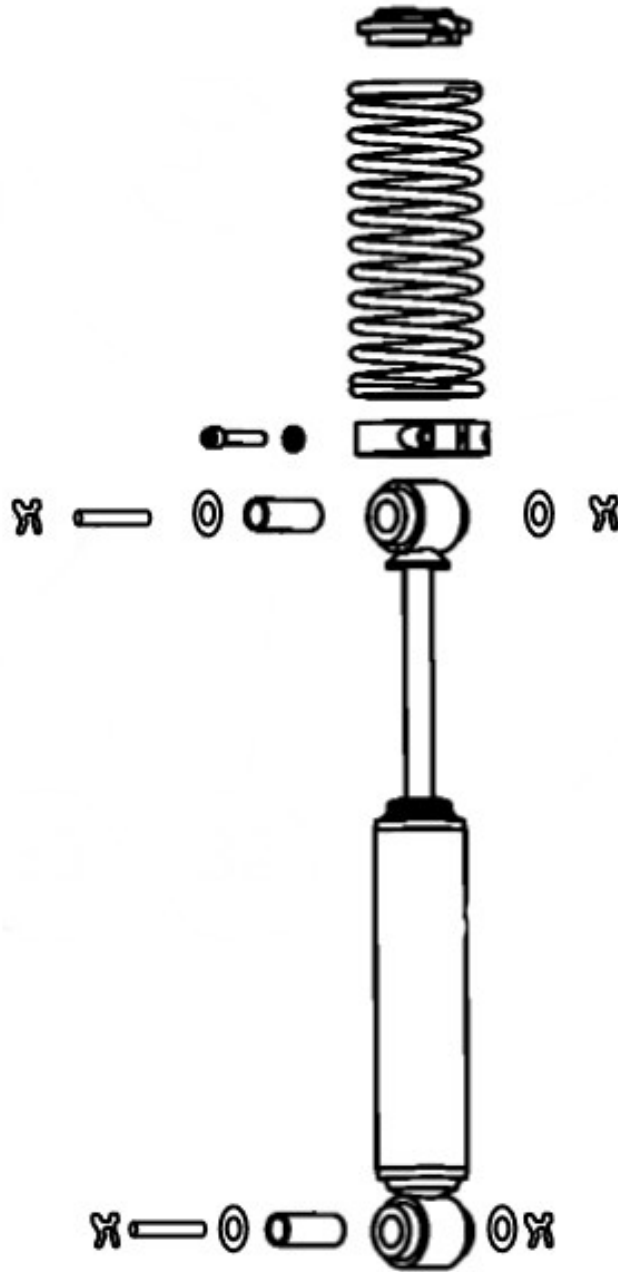


Cushion Shock Hardware



For many years the mounting pins for cushion shock assemblies have used a special pin (000022821), two washers (948975172BG), and two X-washers (936600002BG). This



arrangement has worked well enough, but X-washers can fail. This is especially true if you try to re-use an X-washer after it has been opened to remove the pin.

During development of the EDGE String pinspotter a better solution for mounting hardware was identified. This solution uses new clevis pin 051200349 along with one of the original 948975172BG washers and one new bow-tie cotter pin 911073307. The bow-tie cotter pin locks securely in place and can be reused. The new clevis pin and bow-tie cotter pin are also easier to install and allow for faster servicing of this assembly. Keep a few of each of these new parts handy to convert your existing cushion shock hardware the next time you must perform any service of this assembly.

